

*Debut Issue: July 2009*

# The Field Report

**Niilo  
One Unusual Fieldie**

**The Evolution of the  
Field Spaniel**  
by Peggy Grayson (GBR)

**Fieldspanielit Ry  
Club Show Finland**  
by Marjaana Ojamaa

**When is a Field a Field?**  
by Georgie Patterson (AUS)

# *The Field Report*

*For the international Field Spaniel community*

The Field Spaniel Newsletter welcomes any Field Spaniel related material at any time. Don't be shy either, as our community is small even world wide and we would be delighted to have the issue of too much material rather than too little!

## **What to send?**

### **News & Events**

Did your dog club do something with Field Spaniels, a club show, a meeting of some sort? Did you take part to one? You don't have to be an organizer to report about it, you can either take a point of view of a spectator or interview the organizers, should you wish to.

### **Personal stories**

What about YOUR Fieldie? Tell a story about how you found the rare breed and why you think it's the best dog ever. Or did you take your dog(s) for a special walk or would you like to tell about Fieldies and life in your country?

### **Information & Tips**

Are you a confident trimmer? Do you make hand-made doggy outfits? Are you a Field Spaniel judge? Offer us your best knowledge of Field Spaniels and receive a guru status!

### **Photos**

Photos are always more than welcome, and should be sent in unedited (straight off the camera, unless you are an experienced photo editor). This is not to say that all photos will end up in the newsletter, but the chances are good as it comes in a digital form and it doesn't require quite as high quality photos as a printed paper would need.

### **Send the material to:**

**Report@theFieldSpaniel.com**

### **The cut off –times for each issue is the**

15th of **March**,  
15th of **July** and  
15th of **November** of each year.

The newsletter will be published on the last day of each publishing month.

**Cover photo:** Kiste Heikkinen, Finland.

**Cover girl:** Ch Junior Winner-07 Mandolic Merituuli

## *Index*

<b>From and About the Editor</b>	<b>3</b>
<b>The Evolution of the Field Spaniel by Peggy Grayson, GB</b>	<b>4-9</b>
<b>The Field Spaniel Club Show, Finland by Marjaana Ojamaa</b>	<b>9</b>
<b>When is a Field a Field? By Georgie Patterson, AUS</b>	<b>10-11</b>
<b>Niilo—An unusual Fieldie</b>	<b>11</b>

## *The Field Report Team:*

**Riina Rinkineva-Young**, editor, Australia

**Marjaana Ojamaa**, reporter, Finland

## *Want to join our team?*

Send us email and tell us what you can do!

We would gladly accept help from people who "know everyone" and have a good people skills.

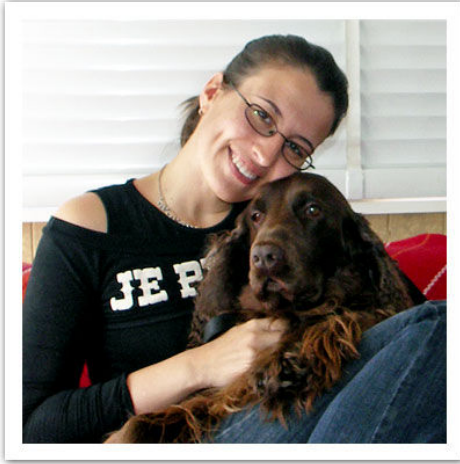
Also, if you have a colourful turn of phrase and could write a column about your life with a fieldie, you would be very welcome.

(Unfortunately all work is volunteer basis and we can't offer you anything but millions of thanks and a groovy email address for your work.)

If you are interested in joining our creative team, please email us at

**Report@theFieldSpaniel.com**

## *From the Field Report Team*



We are so happy to have you reading this! Welcome! This is the first ever world wide Field Spaniel newsletter, the Field Report, and we hope this is the first of many to come. As we are starting out, this is a two girl effort, but we have received help from a couple of irreplaceable allies, Kiste Heikkinen, who captures Field Spaniels with her camera like a true pro and Georgie Patterson from Australia, who provides us with invaluable information (the woman is an encyclopaedia of Field Spaniels) and contacts to some of the most interesting Fieldie-people around the world.

In case you are new to theFieldSpaniel.com and us, let us tell you a bit about the whole idea. This newsletter is the 3-yearly publication of website, which was launched in April 2009. The idea is to collect information and news from around the world onto the pages of the newsletter and the web site, and create a world wide community of fieldists, we are after all, involved with a very small breed, and we kind of tend to know everyone, don't you think? We are a big family - sometimes happy, sometimes not so much, but a family nonetheless. We are all connected by a pair of floppy ears and an eternally wagging tail—be it long or short it is a very happy tail indeed.

theFieldSpaniel.com and TheFieldReport contains the possibility of advertising to Fieldie people, announcing your litters or just doing a bit of PR for your Kennel. The site is intended to function as a community website, but that will be seen in the future whether or not it will work. The trouble with it is that there is lively communities already on the net for the Field Spaniel people, and there may not be room for more, and on the other hand, conversations are always hard to get going, especially if you feel that the only thing worth troubling people with is your good scores at a dog show or a trial. I am hoping though, that the website would not only work as a place to report your

Fieldie news, but also give us a channel to get to know each other in a more personal level as people.

Hopefully this newsletter will bring you another, more familiar way to connect with Fieldie people, you can either get this online for free or have it printed out and sent to you in good old paper form for a few dollars. (Email us for prices, we'll have a think about it if there is interest.)

This newsletter will be published every 4 months, (3 times a year) on March, July and November.

Please note that all stories and photos are subject to copyright unless otherwise stated.

### ***About the team***

Our team, as you know, is made up of two ladies, Riina and Marjaana. We are both Finnish, but Riina lives in Australia, Tas and Marjaana lives in Orimattila Finland. We got to know each other when we both got a field spaniel dogs around the same time, and we both still lived in Finland. Our boys have the same sire, so we instantly felt like a family.

Together we started dreaming about a Field Spaniel club, this was back in 2001, and we ended up starting up the Field Spaniel club in Finland (Fieldspanielit Ry) but eventually we realized that we had bigger dreams than the club was willing to realize. In 2009, we resigned of our duties and left the club to very capable hands to move on to publishing this newsletter and the website for you all.

All of it is put together on the opposite sides of the world with the help of hours of Skype conversations and email. Field Spaniels have made us the best of friends, in fact, when Riina moved to Australia, Marjaana was the only friend at the airport—accompanied with her two little girls and 3 field spaniels - Riina's Primo was already quarantined in Australia.

This is what we're doing and how we ended up doing it.

Hope you enjoy,

Riina Rinkineva-Young and Marjaana Ojamaa



Ch Admiral of Westacres (by Adamant). Wh. 1984. The liver roan Ch Rhiwlas Ryeman Bentoo. Wh. 1986 and his sire Ch Riwlas. Garth Shade Oak. (by ShCh Elmbury Edward) Wh 1984.

Please notice that the names of all photographed dogs are in **bold** in the text.

by **Peggy Grayson**

Up until the coming of dog shows writers referring to 'Field Spaniels' meant any Land Spaniel, such as Sussex and Clumber, that worked in the field; 'Field' was not a breed of Spaniel.

The Field Spaniels we know today are a manufactured breed and it is difficult to see that they were arrived at for any purpose other than something new with which to dazzle the judges at the dog shows of the 1860's which grew in popularity each year. Sportsmen of the time tended to like a bit of white about their Spaniels, it made them easier to distinguish when working, so the idea of a large black Spaniel would not have come from the shooting fraternity. However, as shooting was the main preoccupation of the majority of country dwellers who made up a proportion of the exhibitors at the first dog shows, the new breed of black Spaniel was also encouraged to earn its keep with the guns.

By the time the [British] Kennel Club was formed in 1873 and the first Stud Book published in 1874 which listed all winners back to 1859, a breed known as the Field Spaniel had been arrived at and has its place in the 1874 book, coupled with Cocker and Sussex. After that year, Field Spaniels appeared as a separate breed but Cockers did not have a place so went under the Field entries as 'Spaniels under 25 pounds', while Sussex and, at one time, 'any other liver coloured Spaniel' had a separate heading. The Originals The Field Spaniel was arrived at by a mixture of Cocker, Sussex and black and white Spaniels sometimes referred to as 'Norfolk', with the odd dash of English and Irish Water Spaniels for good measure. This mixture, although it bred some black Spaniels, also produced coloureds which at first were put in the

bucket, but breeders of the time soon realised the potential of a large coloured Spaniel and the variety 'Field' took its place on the benches. The key dog in the production of the early Fields was **Bebb KCSB 2101** who also features in the early pedigrees of all Cocker and Sussex Spaniels. He was by Old **Bebb**, one of Lord Derby's breed thought to be English Water Spaniels, and Flirt, a black Cocker bitch whose dam's maternal line were black Cockers kept and bred by Mr Jones of Oscott, while her paternal line went back to Burdett's Frank, a well known black and tan Cocker,



**Bebb KCS8 2101**. Wh. 1866

and Mouseley's Venus, a liver and white working Spaniel. **Bebb**, although he had no Sussex blood in his veins, was registered as a Sussex Spaniel simply because he was liver coloured. He had several owners but his last and most influential was Phineas Bullock, owner of the Bull's Head Tavern at Bilston, who had a large kennel of Spaniels of various kinds and who took up the production of the new black Field Spaniel with zest.



Bridford Shah. Wh. 1886

The breed by that time contained coloured Cockers, such as the liver roan, Ch Fop and his sire, the liver roan and tan Alonzo, and a line through a bitch called Dyke to Sailor and Jessie who were Irish Water Spaniels.

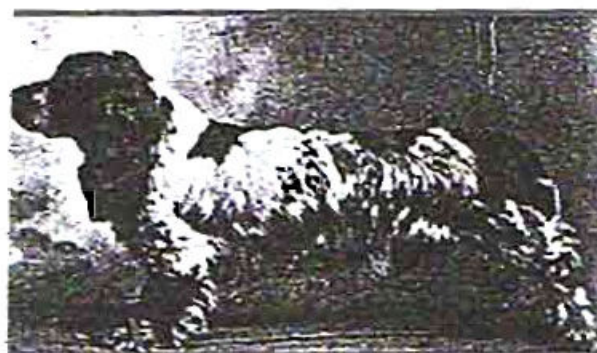
The first Fields were roughly as their inventors envisaged them, large bodied, longer in the rib cage than the Cockers, higher on the leg than the Sussex and with a distinctive and noble head.

It was in the early 1870s that Mr. Jacobs of Newton Abbot, a breeder of several kinds of gundog including Sussex, took up Fields and at once decreed that they should be longer in the body, shorter on the leg and heavier in bone than the dogs and bitches then around. He was a very dominant force in the Spaniel world and those around him took his word as to how the breed should proceed and followed his lead.

Mr. Jacobs produced the type of Field he wanted by mating Fields to the Sussex dog Bachelor, and in quite a short time the breed was a short legged, heavy long bodied dog. The litters he produced were of several colours and, when it came to registering them, blacks, black and tan and liver and tan were marked down as Fields, livers as Sussex, while anything small went in the Cocker register. His lead was followed by Mr. Marcus Woolland, a rich gentleman who lived in Hampshire and with his two brothers owned the Woolland's department store in Knightsbridge. Where Jacobs had led with his high profile winners, Ch Squaw, Kaffir, Negress and Smutty, Mr Woolland followed with the black Fields, Ch Bridford Shah and Ch Bridford Brilliant, whose pedigrees contained sixty per cent Sussex blood.

Meanwhile, Dr Spurgin had been working on the variety paniel alongside his blacks, so a good number

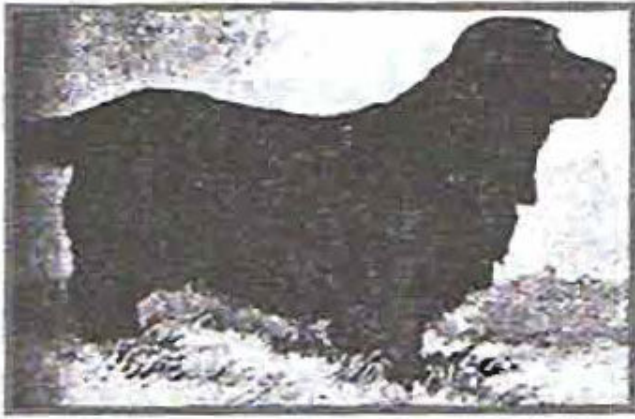
of coloured Fields were then appearing, many under the Trumpington and Chelmsford affixes. Mr Schofield, whose black champion Solus was one of the first of the breed to find fame, also switched to coloureds and bred a line with no affix, his Fields only having one name refixed by the letter 'S'. The day of the coloured Fields was to come as the continual breeding of heavy long bodied black spaniels to each other, from the mid 1870s to the mid 1890s had resulted in some grotesque specimens almost unable to crawl around the show rings and useless for work. This type of Field received so much bad publicity in the dog press that its popularity soon waned and those who wanted to keep the breed in circulation decided to appeal to the public by promoting the coloured variety and, to this end, two bitches were mated to the Earl of Devon's Stallion Basset Hounds and several unusual colours began appearing which had the desired affect of making the public more aware of the Field Spaniel. The cross, which was never officially recorded and denied in some quarters, was, however, very real and a look at the coloured Fields appearing in the 1890s and the Basset Hounds of the period leaves no doubt as to its authenticity. Much research turned up which, breeders had used which bitches to effect the cross.



Coloured Field of the 1890's

### *The Coloured Field*

There were very few liver Fields about, although by that time they did go under the Field register and not automatically into the Sussex, and there were some important back Fields, such as **Ch Magellan**, Ch Ynysowen Iris, Ch Oninda, Lord Dunnahoo, Wardleworth Marquis and Ch Arlington Duke. But it was the coloured Field that took off especially among the growing number of lady breeders and during the 1900 to 1914 period more coloured Fields appear in the Stud Book than blacks. Mrs Rouse had a very large kennel of all colours, orange and lemon and white, lemon and orange roan, some of these with tan trim, blue roan and blue and tan and so on, under the Clareholme affix. Mrs Farmer kept a large kennel of coloured Fields under the Shardelow affix and other kennels specialising in colours were the Shillingstons, owned by Mr Palmer, Mr Harrington's Trumpingtons, Haylock and Barnard's Chelmsfords and they were joined by the Tnimble brothers of Exeter who bred a



Ch Magellan. Wh. 1900.

large number of black as well as blue and blue and tan champions under the Matford affix and Mr Nash's Cliffe kennel of blue and blue and tan.

Around 1912, Mr Mortimer Smith, whose Wribbenhall affix was to come to mean Fields in the between war years, had the first of his black line, although even then he was crossing the breed with English Springers



Lianbrynean Barney Wh. 1936

to get active working Spaniels. Wardleworth produced blacks about the same time and they appear after World War I with the Darlands but by the end of the war the Field Spaniel was down to just a few specimens.

Mr Nash's blue and tan Cliffe Poethlyn appears in the post World War I pedigrees and lies behind the Notlins who feature prominently. However it was the efforts of Mr Mortimer Smith that did most to preserve the breed. He had a black bitch, Wribbenhall Whisper, who was by Gilling Breeze, a son of Wardleworth Marcus who went back through Arington Duke to Magellan and some solid typical black breeding. The bitch line was unregistered.

Whisper was mated to the Tumble s liver and white English Springer dog, Matford Dusk, and the litter resulted in two black Field Spaniel Champions, **Wribbenhall Waiter** and Waitress. Waiter was mated to the Notlin bitch, Nesta, and this resulted in a

beautiful and dominant matron, Wardleworth Libby, the foundation bitch for ti Barnett's Pentwyn kennel.

### *The Dual Purpose Spaniel*

Joining Mr Mortimer Smith were several breeders who were interested in the dual purpose Spaniel arrived at by Field/springer cross; one was Mr R P. Kelland of the Nobel affix and another other Major Beaumont of Strouds. Of the two, the Major produced the better breeding programme, which, by the 1930s, resulted in two Field Trial Champion litter sisters. Although the Major did exhibit, his main interest was shooting and trials and his best trials' Fields were on the small, light side, but we have him to thank for a very typical good sized bitch in Bourbon of Strouds who surfaced after World War II.

Mr Kelland's Nobel Ballestite, as the sire of Brentor Beauty, is the only one of that line that comes down to us. Beauty, mated to the black bitch Ch Wribbenhall Waterben, sired one of the most dominant stud dogs for the breed in the black **Ch Wribbenhall Wetbob**. Mr A. A. Winfield used Wetbob on his bitch, Fieldwin Topknot, and bred the black dog, Fieldwin Trigger, who appears as the sire of all four bitches used after World War II.



Vandyke of Pentwyn Wh. 1943

Mr and Mrs Barnett lived in Wales. Mr Barnett was a keen sportsman, breeding English Springer Spaniels (ESS) for work, and no doubt bought Wardleworth Libby with the idea of making the cross to produce the type of Spaniel capable of working long days on the mountain. Libby was mated to the Springer Dismal Desmond and bred a black and white bitch called Icy Kiss. Mrs Barnett was by then attracted to the idea of breeding

Fields for show and Icy Kiss was mated to Ch **Wribbenhall Wetbob** and produced three CC winners, a liver bitch who went to the States, and two



Ch Wribbenhall Wetbob. Wh. 1932.

dogs, the liver Bobsleigh of Pentwyn and the black **Llanbrynean Barney** who was sold as a companion to the matron of Mountain Ash Hospital. However, Mrs Barnett used to show Barney and also used him at stud and he was bred to Reverend Prosser's Jean of Llandefalle, a black grand daughter of Wetbob who also has several Springers close up in her pedigree. This mating resulted in **Vandyke of Pentwyn**, a liver dog of immense beauty and quality who can be said to have saved the breed from oblivion. He won the Gundog Group at WELKS in 1948, the only Field ever to achieve this - honour.



Ch Renoir of Westwind. Wh. 1948

### *After the War*

After World War the four daughters of Fieldwin Trigger were my own Keepsake of Westwifld, who was out of the black and white ticked Somersbury Spinner whose dam was a sister to Vandyke, Mrs Penhale's

Bourbon of Strouds, a daughter of Beady of Strouds who went back to a Sussex Westmark Belle in the third generation, Miss Heynes' bitch Rothley Rival out of **Baflerina of Bableigh** and Mr and Mrs Micklewright's liver and white Gypsy of Myvod, whose maternal line led back to the Fieldwins and Wetbob.

Keepsake went to Vandyke and bred the liver dog **Ch Renoir of Westwind**, Bourbon went to Vandyke and bred to **Ballerina of Bableigh**, Miss Heynes put Rival to Renoir and bred the Show Champions Teffont Lac and Lalage, and Gypsy mated to Renoir produced ShCh Kip of Kiondrugh.

The next matings were Bourbon to Kip, which produce ShCh Pirouette of Pentwyn and Prefect of Pentwyn. Mr and Mr Escott Cox of Birmingham had come into Fields with the

Ronayne affix and, purchasing Teffont Lalage, mated her to Prefect, breeding Ronayne Pippin who went to Mr and Mr Tannant (Rhiwlas) who by then had bought Kip.



Ballerina of Bableigh. Wh. 1949

Kip and Pippi mated together and bred Justice and Jillian of Rhiwlas and the brother and sister were mated together to breed Elmbur Morwenna of Rhiwlas, one of Roger Hall Jones and Mrs A M- Jones' two foundation bitches for the Elmbury/Mittina kennel.

Mr and Mrs Escott Cox bought Pirouette and bred her to Lac and this resulted in the black dog and bitch, Ronayn Royalist and Columbina of Teffont.

### *Enlarging the Gene Pool*

Thinking to enlarge the gene pool, they mated Lalage twice to Lady Lambe's English Springer dog, Ch Waddon Chase Duke, and the litters went in the inter-bred register then kept by the Kennel Club.

Unfortunately, no one took advantage of puppies from either litter and it was left to Mrs Tannant Of Rhiwlas to discover a two year old bitch from one of them and bring her into the fold under the name of Sherelake of Rhiwlas.

Sherelake was bred to Justice and her daughter, Red Imp of Rhiwlas, went to Royalist and two dogs from the litter feature in today's pedigrees, Ronayne Regal and Gormac Teal, the latter dog later coming under the Tanants' ownership.

Mr and Mrs Everton joined the breed under the Ridware affix and, acquiring Columbina, mated her to her half-brother, Regal, and bred the Jones' second bitch, black ShCh Ridware Samantha, and the liver dog, Ridware Emperor was used on Morwenna to breed **ShCh Little Corporal of Mittina**. Lise and Vanessa of Mittina and Juno of Elmbury was put to Gormac Teal and bred Mrs Jones' litter of Jonathan, SbCh Jillian and ShCh Juanita. Roger Hall Jones used Gormac Teal on Juno to produce the important **Elmbury A-litter Ch Adam**, Ch Adrian, ShCh Anna, ShCh Alice and Anthony.



Ch Wribbenhall Waiter. Wh. 1923



ShCh Little Corporal of Mittina. Wh. 1966

### ***These two litters form the basis of all Field Breeding the World Over***

Of the J litter, Jonathan of Mittina, mated to ShCh Mittina Little Owl, who was out of Lise and by Mittina Shamus, a Jonathan son, bred ShCh Langvine Larch, reserve in the Gundog Group at Crufts, who is behind the Shirmal and Coralmist lines on the maternal side, and ShCh Langvine Loganberry behind Silksheen, Winterwood and Gatnefell. Descended from ShCh Juanita, who was the foundation bitch at Rimaelia, are the Donholmes, the Nadavins and the Sawoods. ShCh Jillian of Mittina was the dam of Templetrine Michael (by Ridware Emperor) and of Templetrine Mark Anthony and Little Bo Peep when mated to Anthony of Elmbury. Wedden and Tayowen are descended from these lines. Another Mittina litter which had an influence on today's Fields was the breeding of Samantha to **Little Corporal** which resulted in the bitches Mittina Sara and Mittina Bonnie.



Ch Adam of Elmbury. Wh. 1969.

Of the 'A' family, Anna, who went to found the Dayhouse kennel, had four litters to Michael and bred a line of important Dayhouse matrons. Lydemoor, Silksheen, Nantddu, Moroto, Elgert and Winterwood are all descended from these. Two important dogs descend from Anna - Dayhouse Barnaby behind the Shirmals, and Dayhouse Henry behind the Morotos. From the Lydemoors came ShCh Lydemoor Llewelyn of Nantddu and ShCh Lydemoor Lionel. From the Morotos **Sh Ch Moroto Chorus**, sire of the ShCh Coralmist Camillia and Conquistador, and of ShCh Shirmal Moonlight Serenade, winner of 23 challenge certificates, ShCh Moroto Chorister, Am Ch Glad Tidings of Westacres, one of the top sires in the States, and Moroto Choirboy who, when mated to the Edward

x Tango Too bitch, Westacres Waterproof, bred ShCh Watermusic of Westacres, foundation bitch for Elgert and dam of ShCh Elgert Dark D'Abilo, ShCh Water Bailiff of Westacres, sire of ShCh Gamefell, Fenella of Moroto, Waterdance and Waterbird of Westacres, both important matrons, Waterbourne, dam of the ShChs Silksheen Bleddyn and Blodneudd. A second Choirboy x Waterproof litter produced Windlass, foundation bitch for Parkanine Alice, mated to **Little Corporal**, bred ShCh Elmbury Edward, a force in much of the modern breeding, notably Lydemoor, Westacres and Rhiwlas.



ShCh Adamant of Westacres. Wh 1980



ShCh Moroto Chorus of Bowgate. Wh 1981

**Adam**, mated to Mittina Bonnie, bred ShCh Dayhouse Bruce, the sire of ShChs Lydemoor Lionel and Llewellyn. Adam, used on the liver roan bitch Rhiwlas Lady Abernant, bred **ShCh Adamant of Westacres**,

the sire of Ch Bacanti Benjamin of Winterwood and **Ch Admiral of Westacres**. ShCh Leonvale Mr Kadberry of Westacres was got by Adrian, who also sired ShCh Mittina Christmas Carol, dam of the Moroto Chorus/Choirboy litter.

### ***The Most Successful Show Field***

ShCh Mittina Cleo, by ShCh Jolyon of Mittina (a Jonathan's son), has been the most successful Field Spaniel in the ring to date, winning 32 challenge certificates. Her only mating, Adam, produced a dog puppy [CIB Mittina Lähdesuo Cleo's Boy\\*](#)) that was sold to Finland and had a profound effect on the type and quality in the Scandnavi Fields, and Mittina Mia, who went to Edward and bred Sh (Mittina Edwina of Coralmist, ShCh Georgius Dalmenus for the Elgert kennels and ShCh Viceroy Moses for the Gunvale kennel.

Hopefully, in words and the photographs used, some idea has been given of how the breed has survived three declines in its fortunes, and how those taking up the breed managed, with diligent care and well-thought out breeding plans, to bring Fields back from the brink of extinction and yet still keep essential characteristics.

In the early 1970s few people knew much about Field Spaniels, which had not been seen at championship shows from 1961 to 1968, but, with the Mittina and Elmbury litters and the offspring appearing in the rings and challenge certificates restored in 1969, gradually more interest was aroused, especially when was realised that Fields have a strong working streak in the makeup and, although they are not as easy to train as the Springer, once trained they are excellent workers, so the realisation that the Field was dual purpose led to an added interest in the breed. \*\*)

\*) Name and link added by the editor, who is Finnish. The mentioned dog sired 42 puppies in 9 litters, and was fundamental to the development of the breed in Finland \*\*) *Previously published in Gundogs-magazine.*

## ***The First Field Spaniel Club Show in Finland***

By **Marjaana Ojamaa**

The first ever Field Spaniel club show was organized in May 2009 in Rönnevik wineyard in Pälkäne. The judge was Chris Attwood from the home country of the breed, Great Britain. The turnout was unexpected, 40 Field Spaniels, which is unheard of in one dog show. The normal amount of Field Spaniels in the biggest show of the year, the Finnish Winner Show is around 15.

Unfortunately the weather wasn't favourable to the show, but a heavy rain started to fall at the same time judging started. We are lucky our dogs are not made of sugar, but held the rain like the water monsters they are! The rain caused a lot more suffering to the handlers and show organisers, however.

Also the age span of the showed dogs was impressive from 5 months to nearly 12 years of age. Unlike most shows, the Club Show accepted all Field Spaniels, including neutered males, and everyone received a written evaluation. There was 8 puppies, 17 adult males and 15 adult females. We also had 4 breeder groups. In addition to normal judging classes, the winners were selected for seven special classes; the best head, best body, best temperament, best tail, best movement and best colouring, which was separated into self-coloured (including white chested dogs) and coloured Field Spaniels.

The Club Show also featured a massive 100 prize draw, which has become somewhat of a tradition in the Finnish Club events; there's usually more prizes than there are people attending! The prizes included



Photo: Kiste Heikkinen

Unoluna, breeder/owner: Asta Uusi-Illikainen

dog food and dog supplies amongst other items.

The club is planning to repeat the show next year, and a lovely spring weather has been pre-ordered for the event.

**For more [photos, please visit Kiste's gallery.](#)**

BOB-puppy	Mussukan Marokko (dog)
BOS-puppy	Mussukan Madeira (bitch)
BOB-veteran	FIN MVA V-03 Hurricane's Besame Mucho (bitch)
BOS-veteran	INT FI S N MVA V-03 Maifield Lars Leevi (dog)
<b>BOB/BIS</b>	<b>Unoluna (dog)</b>
<b>BOS</b>	<b>FIN MVA JV-07 Mandolic Merituuli (bitch)</b>

# When is a Field a Field?

*There is nothing like the presence given when a well put together and superbly headed Field enters the ring — he is truly a majestic dog.*

by **Georgie Patterson**  
(Silverbirch kennels, VIC, Australia)

I suppose the interbreeding of dogs in bygone days has left a legacy for the judge, putting the correct characteristics with the right breed. Needless to say this is far more difficult with rarer and lesser known breeds, and the fact that so few are shown and not always together, a picture is rather hard to acquire of what is and is not correct.

Knowing the crosses that produced each breed should be paramount, otherwise you will have no idea of what or why some individuals look like another breed to you.

## *The Field Spaniel is an individual*

The Field Spaniel is a noble upstanding sporting spaniel built for speed and endurance and therefore should not resemble any of those breeds used to keep him in existence. He should not be short in leg and long in body like the many Sussex Spaniel crosses in the establishment of this breed. He should not remind you of a Cocker, short in leg and square in body. The last cross with the English Springer left us with Fields that are long in leg with thin or under-developed bodies, that leave the dog unbalanced for his size.

He is an individual and should look like a Field. He needs to be slightly off square, his body length slightly longer than his leg length. This breed has well developed chest and prosternum, both in depth and width.

We require a moderate spring of rib with a strong and level topline, and a strong short loin. Well-developed second thighs in conjunction with well let down hocks give great strength to the hind quarters. A cut up to the thighs is totally incorrect for this breed, as are long loins that afford the dog no drive from the hindquarters. His tail should be set on below the level of the back and carried no higher than the back. He requires substantial drive from the hindquarters to move correctly, he is a well developed and heavy dog for his size. He is not a small spaniel, being approximately 18 inches in height and weighing up to 50 pounds.

The lay of the shoulder needs to be balanced at the

other end with the turn of stifle.

I would expect as judges/breeders, you would understand that the hardest thing on any breed to achieve is the correct lay of shoulder and length of upper arm. I don't think that as trainee judges a comment like "it's short in upper arm" is in any way constructive to understanding this breed, let alone to judge it.

Look at the dog and see what it does have that the breed requires. Yes, it could have a better length of upper arm, but it has good bone, nice size, and is balanced.

The front is only a part of the overall dog and I see plenty of other breeds winning day in day out that are not exactly correct in the shoulder. The lay of the shoulder needs to be balanced at the other end with the turn of stifle and our standard calls for a moderate turn of stifle.

## *The Hallmark of the Breed*

Heads are the hallmark of this breed and to some enthusiasts, set them apart. The foreface should be slightly longer than from the stop to occiput, pronounced eyebrows, and the chiselling beneath the eyes finish the picture. Without this chiselling, the head is rather plain. Almond-shaped eyes with colouring that matches the coat are correct. Remember that a liver Field's eye colour will darken as it gets older and a black's will lighten. Light eyes are a throwback to the Sussex in our lines.

When judging was done on a point score system the whole head was only 20 points out of a possible 100, so please take this into consideration when judging this breed. I would much rather a dog with a plain head be placed first than one with a long loin going up. I would not penalise a dog with missing or misplaced teeth. You can see that the jaw is correct when you look into a mouth, this is a working breed and in my opinion should not be penalised.

He has a long unhurried stride, or an effortless gait, that gives the appearance of great stamina, straight and true as seen from the front and rear. To judge correct movement **the dog needs to be shown on a loose lead**. The dog needs to be able to lower its head as it moves into its gait and should not be "strung up" as the dog then cannot move as it would if it was

*"Almond-shaped eyes with colouring that matches the coat"*

working. To see the reach in the front the head will move out and the front paws will extend and a line could be drawn from the tip of the dog's muzzle to its feet as it moves around the ring. Rear movement should be judged from the dog's pads as it moves, rather than watching their legs. Fields are very slow maturers and the hindquarters may take time to tighten up. This does not mean that a dog should have cow hocks or move closely behind. They must be wide and square when viewed from behind, and it is near impossible to have a dog with the correct turn of stifle, thick well-muscled loin, and well let down hocks to be close behind. This breed needs to be in good hard working condition — he is, after all, a Gundog.

### ***Our lines can produce a variety of colours***

Colour is something that fools lots of judges and it is very easy to say “picture the dog as one colour”. Fields come in liver, black, roan, any of these with tan markings. Clear liver and white or black and white is unacceptable. The standard was recently altered to allow for white or roan on the front. This has always

been allowed, but was not written in the standard. Our lines could produce any of these colours, so who knows what we may get!

There is nothing like the presence given when a well put together and superbly headed Field enters the ring — he is truly a majestic dog.

When judging this lovely breed, please give consideration to the few breeders who have brought this dog into the 21st century. It is a difficult breed with a small gene pool, but it has some excellent representations of the breed here in Australia, and they deserve that acknowledgement in the show rings here as well.

He is not a small spaniel, being approximately 18 inches in height and weighing up to 50 pounds.

**Originally published in  
Australasian Gundog - Summer 2000/2001**

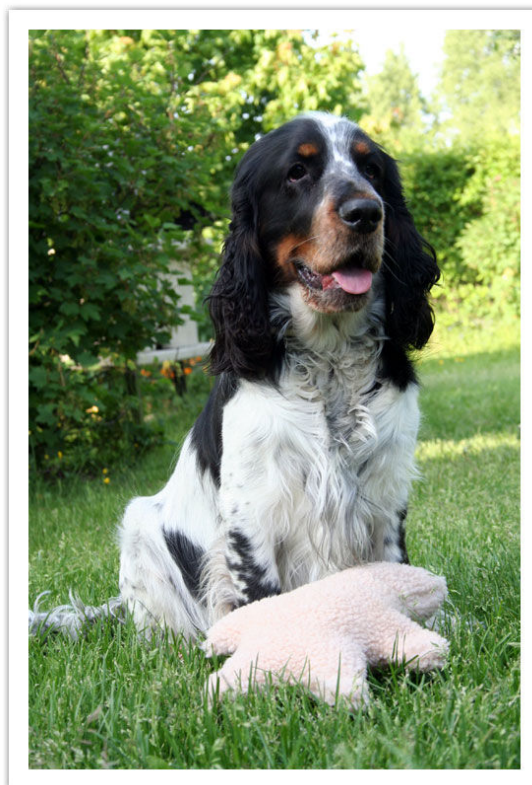
## *That's One Unusual Fieldie!*

When Niilo was born on the first of June 2006, nobody knew exactly what to make of him. His breeder Asta-Uusi Illikainen in Finland bursted into laughter and called the sire's owner Marjaana Ojamaa to discuss this odd colouring one of the puppies had. There is no question about it; Niilo was special from the very beginning.

It didn't take them long to find out that Niilo's colour was perfectly valid colouring for a Field Spaniel, even though it was very uncommon; He is a Blue Roan and Tan. He is what they mean in the breed standard by “.. or any of these with tan marks.” It sounds simpler what it looks like, and if you know anything about Field Spaniels, you know how rare both tan marks and blue roan are, and to having those two present in one dog is almost unheard of.

Niilo turned out to be very skilled at blood trail tracking, and his success at dog shows has brought him the Finnish champion title. He is found in official papers as **Ch Tamango**, from *Estonian Winner 09 Rhiwlas Fantasia* and *Ch Quibble's Minos*.

Niilo is the proud owner of a lovely female Mirva Härkönen and has two black siblings a bitch *Tasiminia* and a dog *C.I.B Nordic Winner, Swe Ch, NoCh, Est Ch, Est Winner-09 Tamax*. He also has another fieldie familymember, young fella, Noa, officially named *Mussukan Madagaskar*.





*Niilo & Noa*



**THEFIELDSPANIEL.COM  
C/O RIINA RINKINEVA-YOUNG**

Po Box 26  
New Town  
Tasmania 7008  
Australia

Phone: +61 4475 45 120  
E-mail: Report@theFieldSpaniel.com  
Twitter.com/theFieldSpaniel

*Www.TheFieldSpaniel.com*

*The Information and Community  
Website*

## *Winners of the Field Spaniel National Speciality Show in Wisconsin, USA*

BISS CH Goosberry's Red Sky at Night  
BOW Blackbriars Absolutely Fabulous  
BOS CH Kaleidoscope Hot Topic  
AOM CH Goosberry's Night on the Town  
AOM CH Bitterblue Here Comes the  
Judge  
AOM CH Marshfields Daniel Boone  
AOM CH Nautica's Overlk Red Sails n  
the Sunset  
AOM CH Calico's Running up the Fare  
CDX RE SH WD  
WD Blackbrier's Aristocrat  
RWD Maplesugar Hold on Tight To Your  
Dreams  
WB Blackbriars Absolutely Fabulous  
RWB Northsky's Chocolate Éclair

## *Newsletter Schedule*

### **ISSUE 2/2009**

15.11.2009 Deadline

30.11.2009 Published

### **ISSUE 1/2010**

15.3.2010 Deadline

31.3.2010 Published

*The Field Report is published every 4 months, on March, July and Novem-  
ber.*

**More info on [www.TheFieldSpaniel.com](http://www.TheFieldSpaniel.com)**



*Follow Us On  
Twitter*

**[http://Twitter.com/TheField  
Spaniel](http://Twitter.com/TheFieldSpaniel)**